

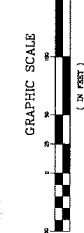
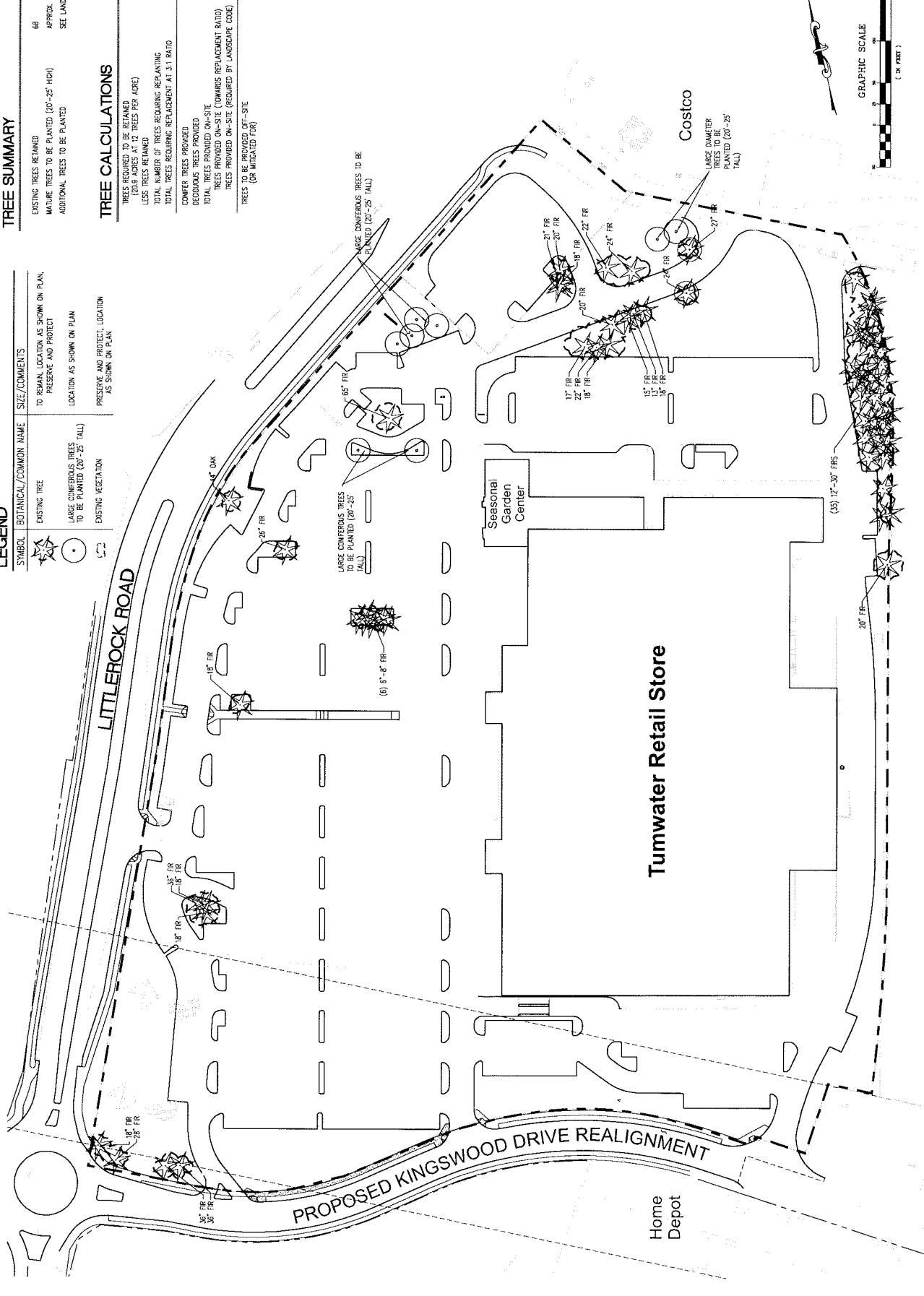
TREE SUMMARY

EXISTING TREES RETAINED = 68
 MATURE TREES TO BE PLANTED (20"-25" HIGH) APPROX. 6
 ADDITIONAL TREES TO BE PLANTED SEE LANDSCAPE PLAN

TREE CALCULATIONS

TREES REQUIRED TO BE RETAINED (20' DIA. AT 12' TREES PER ACRE) = 251
 LESS TREES RETAINED = 68
 TOTAL NUMBER OF TREES REQUIRING REPLANTING = 183
 TOTAL TREES REQUIRING REPLANTING AT 1:1 RATIO = 366
 CONIFER TREES PROVIDED = 210
 DECIDUOUS TREES PROVIDED = 210
 TOTAL TREES PROVIDED ON-SITE = 420
 TOTAL TREES PROVIDED ON-SITE (TOWARDS REPLACEMENT RATIO) = 249
 TREES PROVIDED ON-SITE (REQUIRED BY LANDSCAPE CODE) = 208
 TREES TO BE PROVIDED OFF-SITE (OR INDICATED FOR) = 300

SYMBOL	BOTANICAL/Common Name	SIZE/COMMENTS
	EXISTING TREE	TO REMAIN, LOCATION AS SHOWN ON PLAN, PRESERVE AND PROTECT
	LARGE CONIFEROUS TREES TO BE PLANTED (20"-25" TALL)	LOCATION AS SHOWN ON PLAN
	EXISTING VEGETATION	PRESERVE AND PROTECT, LOCATION AS SHOWN ON PLAN



Source: PACLAND, 2005



Tumwater Retail Store SEIS

Figure 3.3-2
Tree Retention Plan, Alternative 1